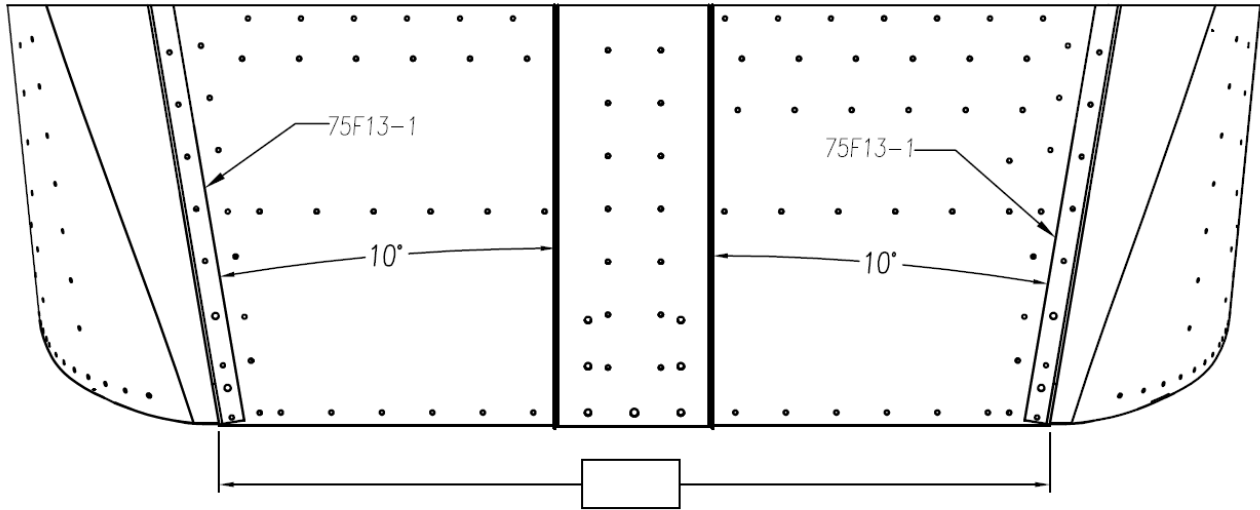


TOP FRONT FLOAT ATTACHMENT FITTING (Welded Assembly)

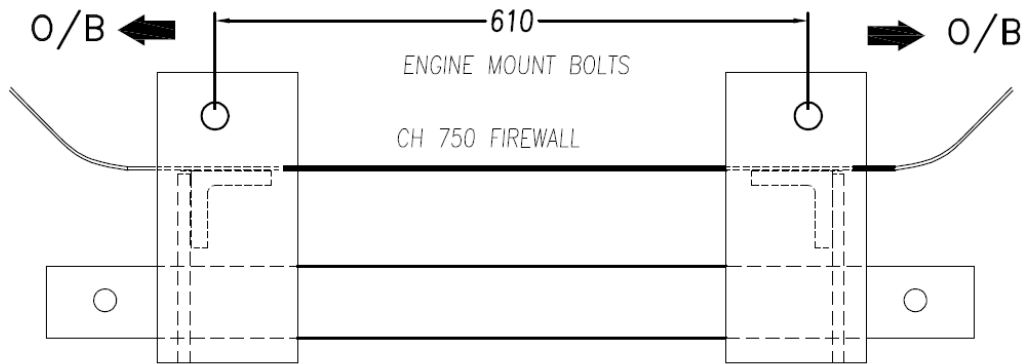
The Front Float Attachment Fitting can be installed on a finished CH 701/750/801 aircraft, but it can also be installed during its initial construction. If a builder fully intends to install floats on his/her aircraft later, it is in many ways easier to install the Front Float Fitting before the engine is installed (easier access, etc.)

This fitting (FL-135 for a CH 750 or 22-F11-12 for a CH 801) has welded tabs that should fit exactly between the two longerons under the front cabin floor, at the firewall. Because these longerons are not pre-drilled in the airframe kits, there can be slight variances in their installation between aircraft (depending on exactly where builders have drilled their holes).



BOTTOM VIEW - FRONT FUSELAGE (as seen from below)

Please provide the requested distance in the above box in millimeters (mm).



INSIDE DISTANCE BETWEEN EXTRUSIONS

In order for Zenair to make (weld) the fitting, IF the longerons are already drilled and installed, we need to know the exact distance between them (see diagram above for assistance). If the longerons are NOT yet drilled and/or installed, we can supply the fitting as per the drawings, but the builder should then wait until he receives his welded Front Float Attachment Fitting before drilling/installing the longerons.

If questions persist, please contact Zenair: zenair.info@gmail.com or 705-526-2871

* The fittings are similar for all Zenair high-wing aircraft designs and for all Zenair float sizes.

1450*

CH 750 FLOAT INSTALLATION

Copyright© 2010 CHRIS HEINTZ

DATE: APR 12, 2012